

Covid 19 and Vaccination Programme Update

Manchester Health Scrutiny Committee, 25th May, 2022

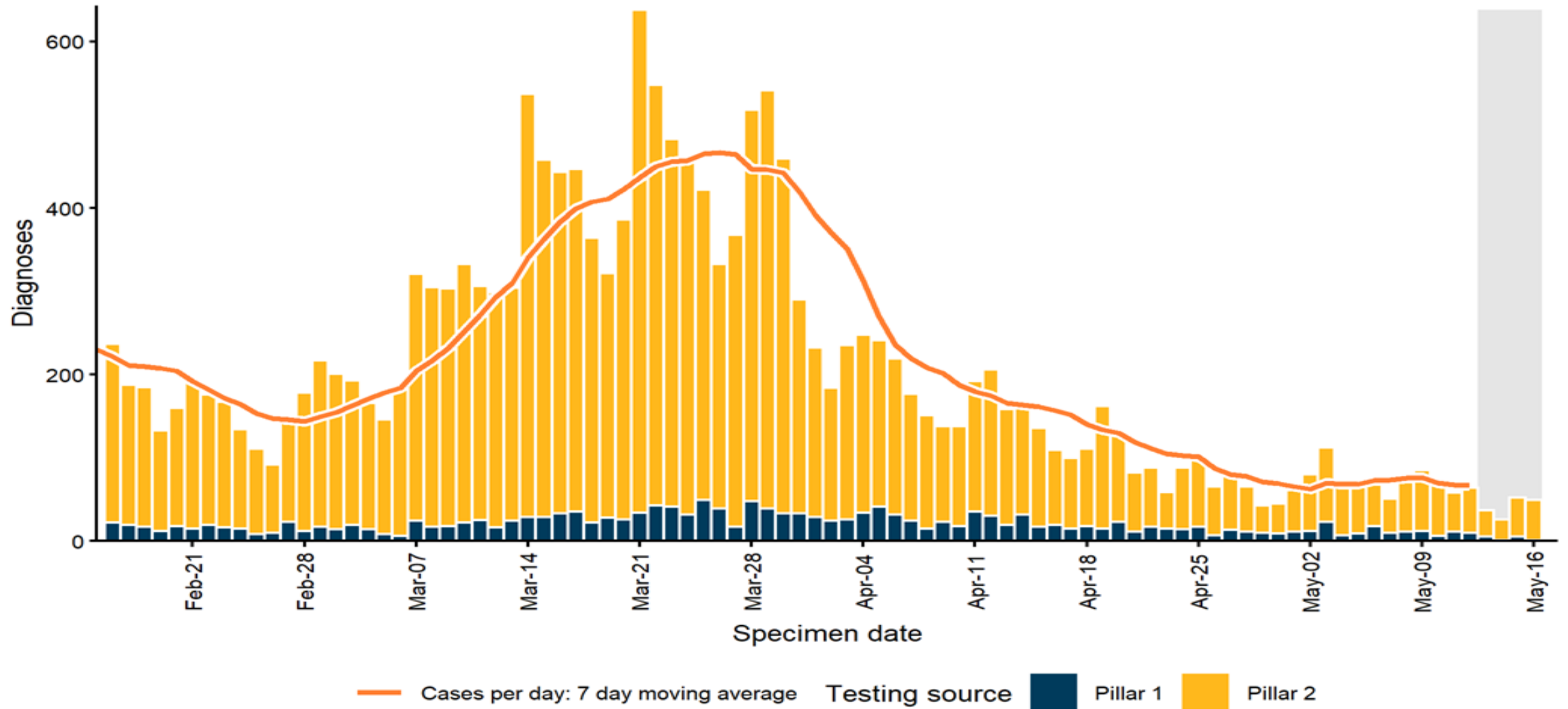
This slide set is in three parts:

Part 1. Covid data update (slide 2-4)

Part 2. Manchester Health Protection System -Living Safely and Fairly with Covid (slides 5-15)

Part3. Covid Vaccination Programme update including the plans for 2022/23 (slides 16-34)

Figure 1. Epidemic curve of confirmed COVID-19 cases in Manchester from February 15, 2022 to May 16 2022. ONS Infection survey North West (week of 11th May) shows a reduction down to a prevalence of 2.05% or 1 in 50 people.



Summary of number of deaths and excess deaths (all causes) by place of death: Deaths registered in 2020, 2021 and 2022 combined

Place of death	Total registered deaths	Total expected deaths	Deaths involving COVID-19	No. of excess deaths	Excess deaths ratio	% Deaths involving COVID
Hospital	4,141	3,814	1,061	327	1.08	25.6%
Care Homes	1,182	1,037	143	145	1.14	12.1%
Elsewhere	2,990	2,313	110	678	1.29	3.7%
Total	8,313	7,164	1,314	1,149	1.16	15.8%

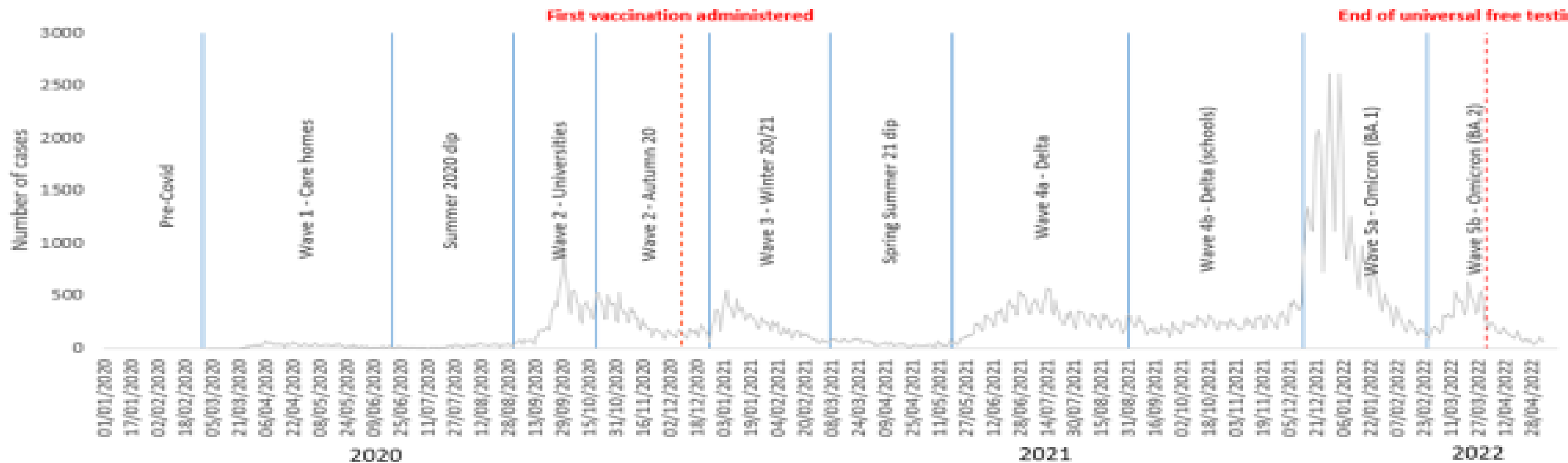
Notes:

1. Figures for 2020 cover the period from Week 12 (week ending 20 March 2020) onwards to exclude deaths in the pre-pandemic period
2. Figures for 2022 cover the period up to Week 13 (week ending 1 April 2022)

Source: Office for National Statistics (ONS) weekly provisional figures on deaths occurring and registered in England and Wales by Local Authority

Waves of the Coronavirus (COVID-19) Pandemic in Manchester

The various waves of cases in Manchester can be labelled and given approximate timeframes to help understand differences in the spread of the virus



Manchester Health Protection System

Using learning from our pandemic response to deliver a fit for purpose local health protection system for Manchester

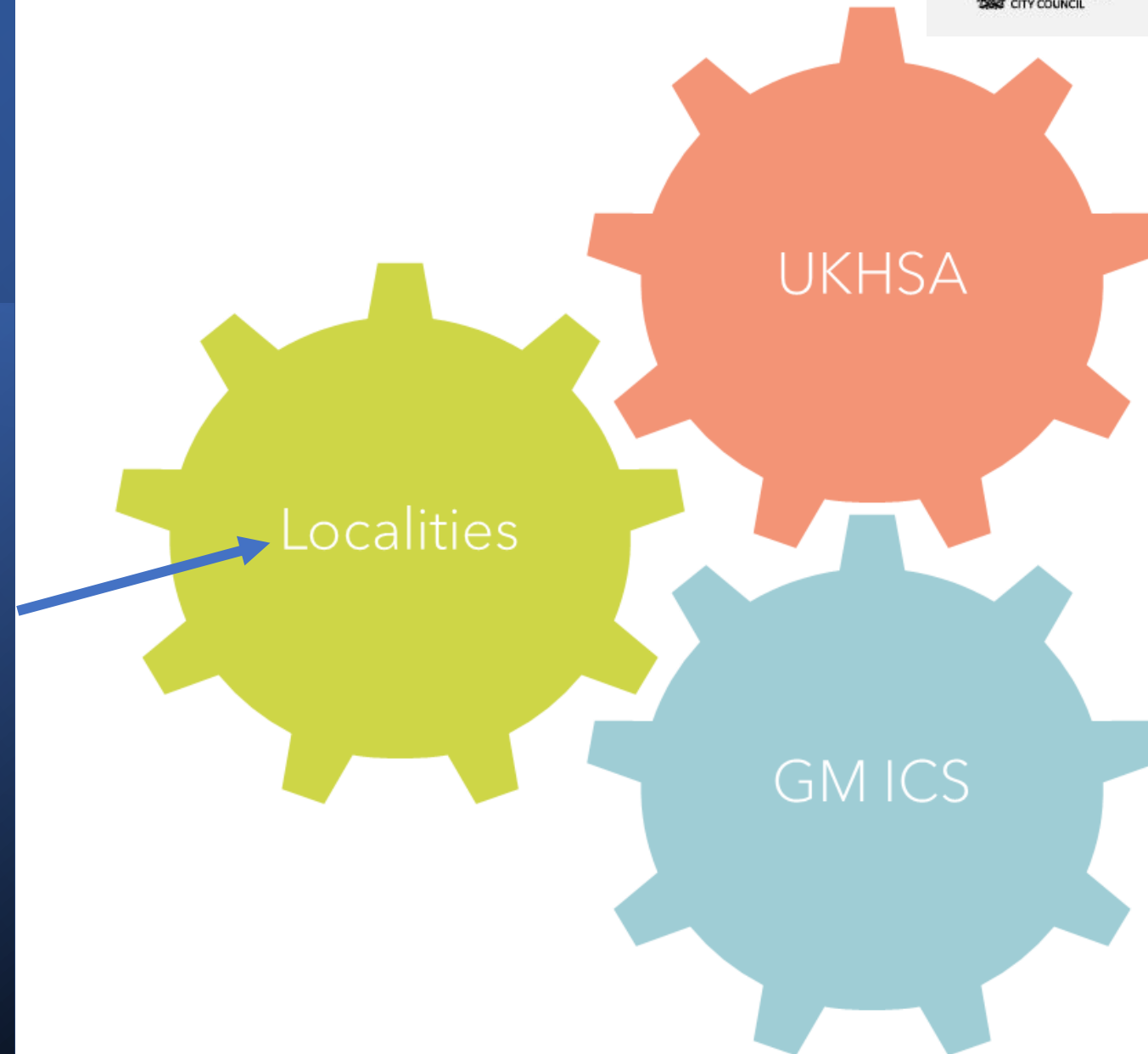
Health Scrutiny Meeting

25th May 2022

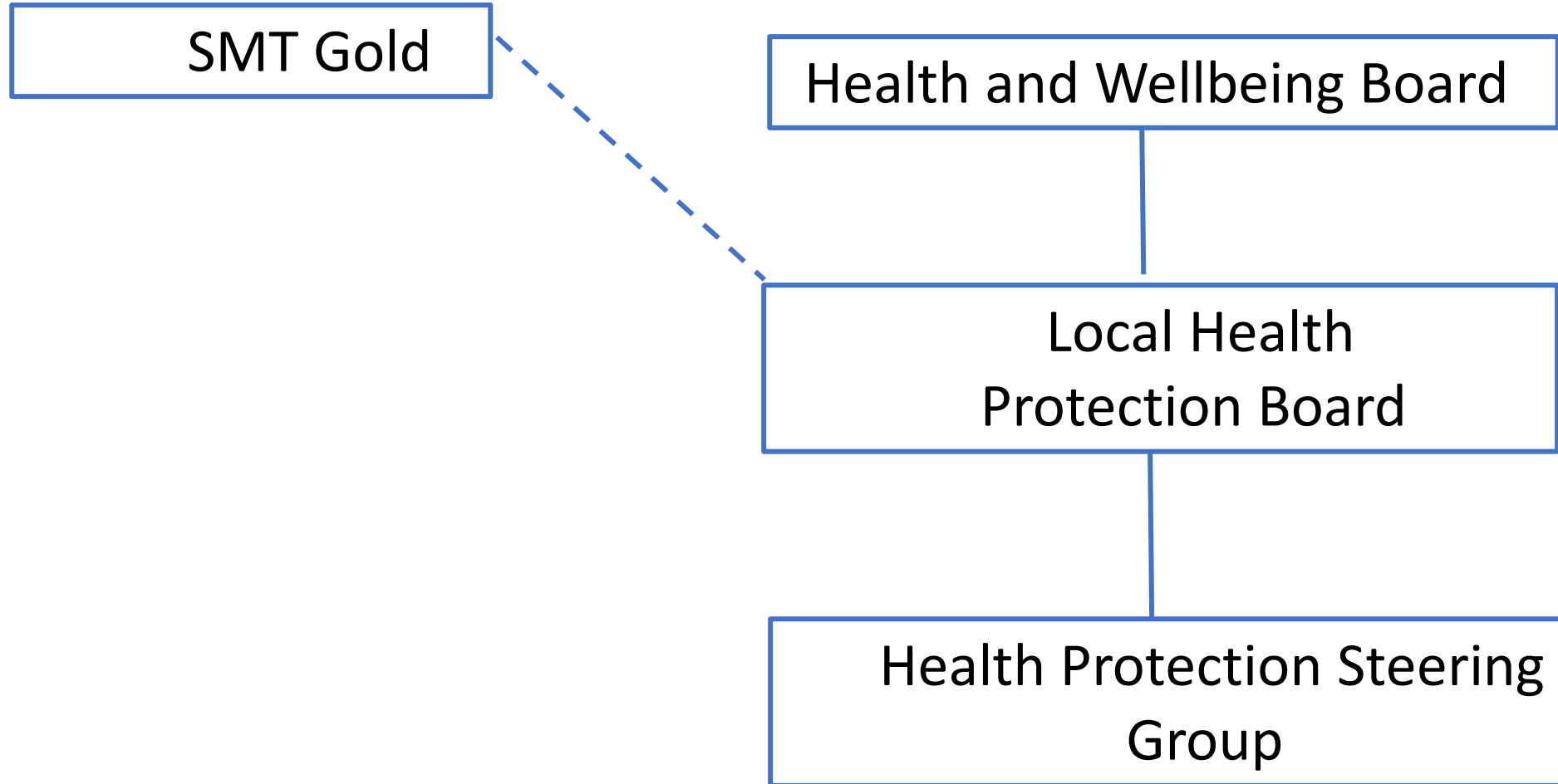
Manchester as
part of a wider
health protection
system

Integrated Care System
(ICS)

UK Health Security
Agency (UKHSA)



Local Governance Emerging Arrangements – April 2022 onwards



Manchester Health Protection Teams – April 2022 onwards

Local School Immunisations Team

Primary Care & other NHS Services

Specialist TB Teams

Strategic Health Protection Team

Environmental Health Team

Health Protection Hub

Public Health Commissioning Team

Community Health Protection Team

Neighbourhood Teams

NW (GM) UKHSA Team

GM Health Protection Node

GM Emergency Planning & Resilience Teams

GM Screening and Imms (SIT) Team

Our Local First Health Protection System

We need to manage infectious diseases (e.g. scarlet fever, chicken pox, monkeypox) by:

- Preventing
- Detecting
- Controlling
- Responding
- Preparing

Ways of working:

- Think Family approach
- Focus on health equity
- Collaboration

Where we need to focus our efforts (1)

- The COVID-19 pandemic has demonstrated the value of looking at infectious disease data at a **whole population level** as well as for high-risk individuals, settings and locations. This has raised expectations among partners of the way data can be presented and investigated to inform the way our health protection work is planned and delivered in a more focused and targeted way.
- Going forward, we will have a continued focus on the routine monitoring and reporting of patterns and trends in infectious diseases in different:
 - **Geographical areas** e.g. wards, neighbourhoods etc.
 - **Sexes and age groups**
 - **Ethnic groups**
 - Other **communities experiencing inequalities** e.g. disabled people, migrant communities
 - **Household types** e.g. Mosaic Groups
 - Areas containing concentrations of higher risk **housing and occupations** as identified by 2021 Census and local administrative datasets
- Triangulation of different types of data and insight will provide a more rounded picture of an issue and will allow us to consider 'soft intelligence' alongside 'hard data'.

Where we need to focus our efforts (2)

Focus on:

- **High risk, clinically vulnerable, underserved people**
- **High risk settings and locations**

Manchester has a high number and range of complex and high risk settings. These are settings where:

- individuals may be more vulnerable to infectious diseases
- where infectious diseases are more likely to spread
- where outbreaks may be harder to control.

Complex and High Risk Settings in Manchester include:

- Adult's care homes
- Supported living accommodation
- Homeless hostels
- Asylum seeker provision
- Prison
- Manchester Airport
- Sex on premise settings
- Hospice
- Universities Halls of Residences/large shared private accommodation
- Children's care homes and residential settings
- Boarding schools
- Special Educational Needs schools
- Day centres
- Large businesses, warehouses

Our Manchester 10 Health Protection Pillars

1	2	3	4	5	6	7	8	9	10
Infection Prevention Control	Vaccination and Immunisation	Screening	Respiratory Diseases COVID-19 Influenza Tuberculosis	Environmental hazards Air Quality	Mouth Infection Prevention Mouthcare Hydration Dental checks	Anti-microbial resistance (AMR) Mandatory Reported Healthcare Associated Infections	Blood borne viruses Hepatitis B Hepatitis C HIV	Sexually Transmitted Infections, including HIV	Emergency Response/ Incident Management

Tackling Inequalities Improving health equity

Surveillance – Work underpinned by the best available evidence, data and intelligence

Work supported by communications and engagement work

Health Protection standards delivered within commissioned services

Examples Pillar 1 – Infection Prevention Control

General work:

- Proactive relationships need to be in place with all high risk settings and key stakeholders
- Regular visits to high risk settings
- Clear system in place to identify which settings need additional support

Prevention work with education settings:

- E-BUG training
- Hand hygiene work
- Annual Infection Prevention Control Training Session
- Infection Prevention Control (IPC) champions identified in each setting
- Link Infection Prevention Control work with the Healthy Schools Award
- Align work with other existing schemes

Examples Pillar 2: Vaccination & Immunisation

Priorities for 2022/3:

- Development of a 0-5 Childhood Immunisations Project to address decline in coverage and reduce inequality
- Spring/Summer Covid-19 Vaccination Delivery – Evergreen & mobile health equity offer (*)
- Winter planning for Covid-19 and Annual Influenza, Shingles & Pneumococcal vaccination delivery
- Development of a resilient vaccination outbreak response system
- Oversight and shaping of GM Maternity Vaccination pilot
- Develop the data and intelligence systems to support informed approaches to childhood immunisation coverage, working with primary care, neighbourhood teams and local communities
- Develop further evaluation priorities with University of Manchester

(*) Joint Committee on Vaccination and Immunisation recommended Autumn/Winter COVID booster on 19 May 2022

Examples Pillar 2 – Screening - links to pillar 7 TB

Tuberculosis

- TB screening with migrant health population
- Latent TB screening programme

General

- Screening and vaccinations for children newly arriving to Manchester

Spring Vaccination Programme

Manchester Spring Vaccination Plan March – September 2022



MANCHESTER
CITY COUNCIL



Manchester Health & Care
Commissioning



Pharmacy



Manchester University
NHS Foundation Trust



Manchester Local
Care Organisation



Spring Vaccination Programme

High Level Priorities March – September 2022

Access



- Spring Booster delivery to eligible JCVI cohorts (from 21/3/22)
- First dose vaccination delivery to healthy 5-11's (from 4/4/22)
- Maintain comprehensive 'Evergreen' offer to anyone eligible for first, second and booster
- Continue pop-up/outreach offer to support vaccine equity informed by learning review from January – March delivery
- Contingency plan in place to provide surge capacity at 2 weeks' notice
- Maintain taxi offer, Gateway booking system & Covid-19 helpline support for vaccination

Strategy

- Plan for autumn/winter vaccination 2022/3
- Development of a wider vaccination & immunisation strategy building on learning from the Covid-19 programme
- Work with GM on evolution of new delivery models (eg. Immunisation Hub Pilots)
- Further evaluation development with University of Manchester

Information



- Citywide and local communications to support and promote vaccination offer
- Bespoke communications to support vaccine equity focus

Motivation



- Targeted engagement at neighbourhood, citywide and within community groups and inclusion health groups

Spring Vaccination Programme

Covid-19 Vaccination Delivery Model

A single system approach focused on 'place' and 'person'



8 Vaccination Sites
Run by Primary Care Networks
including bespoke clinics

Evening

Pre-book



GP Practice 'Back to Practice' & Walk In Offers



8 Community Pharmacy
Vaccination sites

Weekend

Walk in

Taxi Offer
Booking/Helpline



Mobile offer to Care Homes, Housebound, & Wider Care Settings



Hospital Hub Oxford Road
Manchester Foundation Trust
Manchester Local Care Organisation
RMCH

Evergreen /Boosters (to end April)
Frontline health & care staff
Pregnant women
Specific patient groups
Surge capacity



Roving Model
Pop Up Clinics
Mobile Vans



Greater Manchester
Mass Vaccination Centre,
Etihad Campus

7 days a week



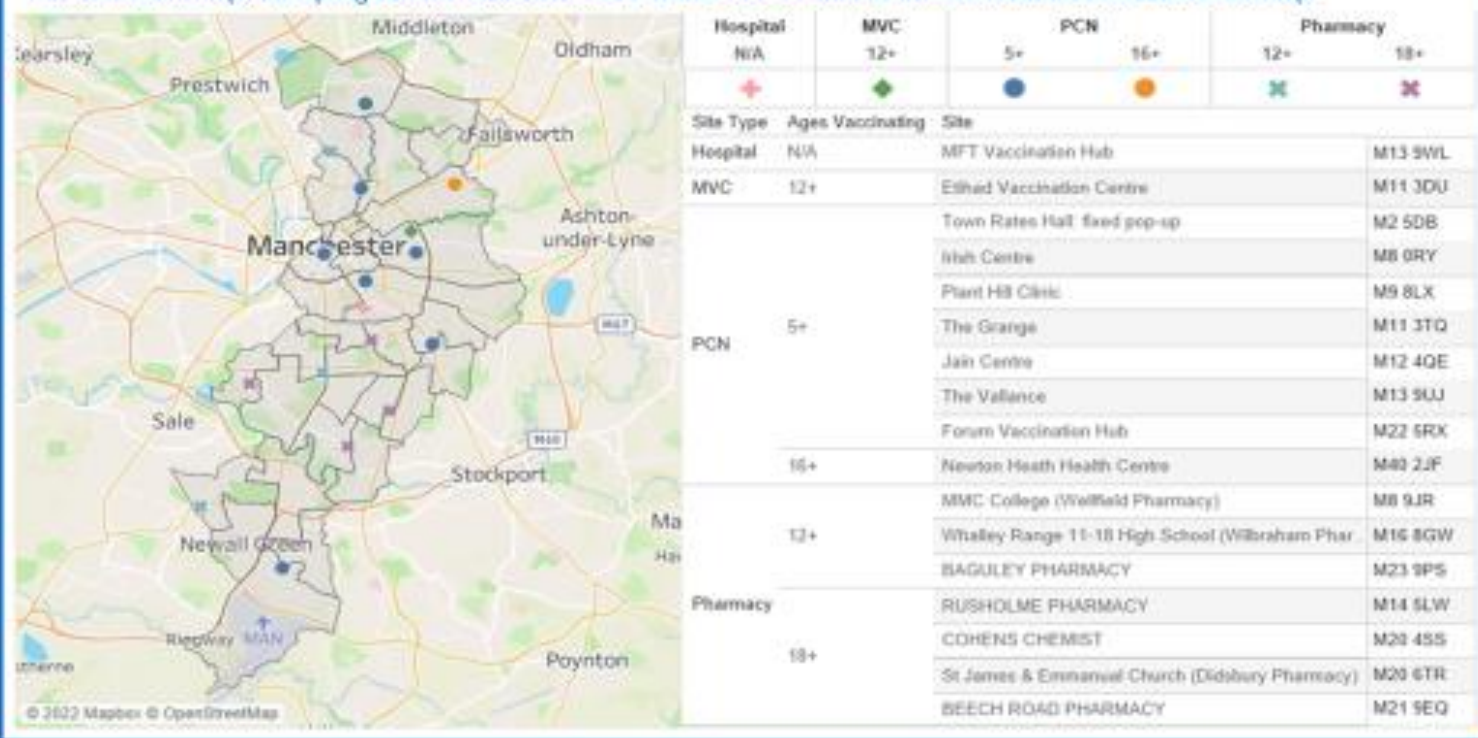
Overseas
Vaccination
Recording

Spring Vaccination Programme

Vaccination site map

COVID Vaccination Programme - Spring Booster Sites

This dashboard maps the Spring Booster vaccination sites. Hover over the sites in the list to view their location on the map.



- Clinics available 7 days a week, morning, afternoon, evening across the city to meet modelled demand
- Surge plan to enable all sites to scale up within 2 weeks to increase vaccination capacity if required
- Peripatetic outreach service will continue to run clinics to support vaccine equity throughout spring and summer

Spring Vaccination Programme

Spring 2022 Covid Booster Data and modelling

160,149 total patients are now eligible within JCVI Cohorts
133,476 (83.3%) have received their first dose
127,536 (79.6%) have received their second dose
98,874 (61.7%) have received their third dose
1,382 (0.9%) have received their fourth dose

JCVI Cohorts for Spring Booster

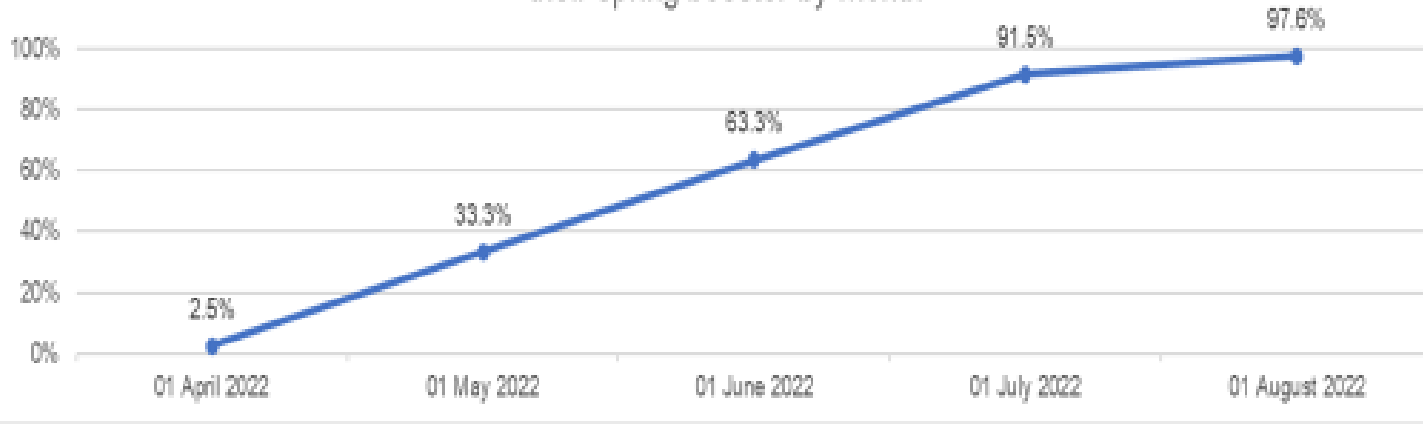
- People aged 75 & over (by 30/6/22)
- All residents of older adult care homes
- Eligible housebound individuals
- Immunosuppressed people aged 12 & over

Based on the total eligible population (c98,874), Manchester will need the capacity to deliver c.6,592 vaccines per week on average across the 15-week period assuming the highest case scenario of 100% uptake.

We can profile when this population will become eligible for the 2nd booster vaccine based on when 1st booster doses were delivered (assuming a gap of 180 days between the two booster doses as per current national guidance). As per the chart, there is a gradual increase of people being eligible from April to July with a drop off through to August.

In addition, the National Booking System and guidance now enables people to book for a vaccine 90 days after their 2nd Booster dose which we expect may contribute to an initial surge in demand.

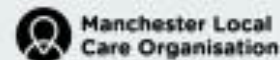
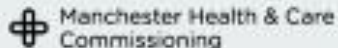
Percentage of eligible patients who have received their dose that can receive their spring booster by month



Spring Vaccination Programme

Spring Vaccination Programme

Performance Data and Information
Update for Health Scrutiny
May 2022



Spring Vaccination Programme

1st/2nd dose & winter booster data as of 17th May 2022

COVID Vaccination Coverage as of 17 May 2022

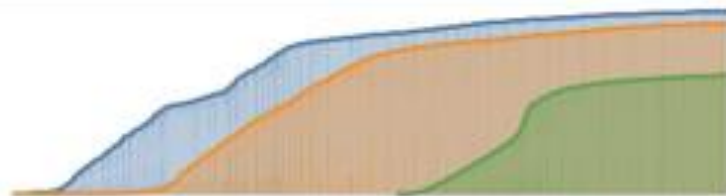
Data Source: National Immunisation Management System (NIMS)

For patients registered with a Manchester GP Practice:

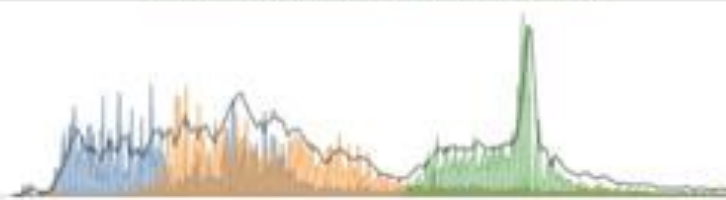
413,196 patients given their first dose ▲
 384,752 patients given their second dose ▲
 268,367 patients given their booster dose ▲

+ 545 in past 7 days
 + 624 in past 7 days
 + 984 in past 7 days

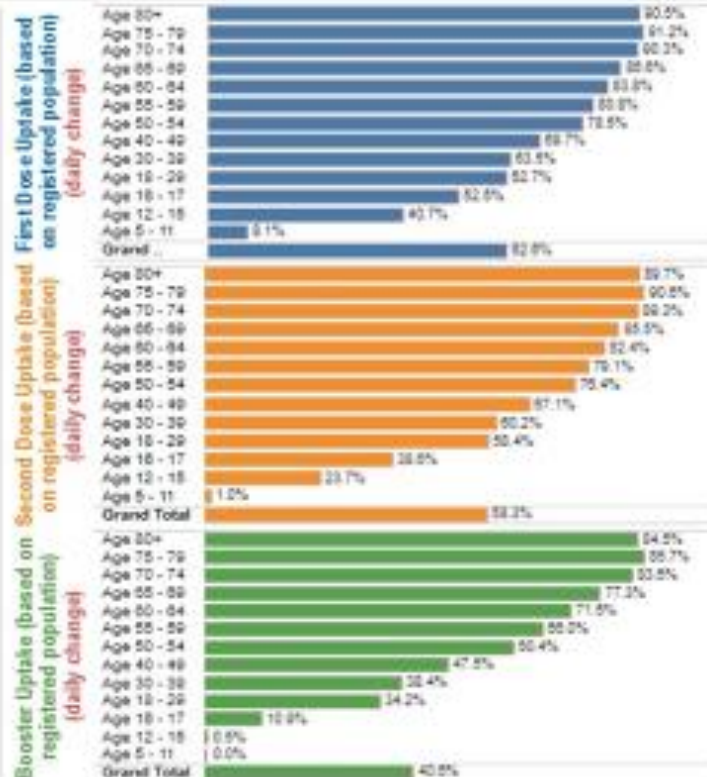
Cumulative Doses



Daily Doses (including 7 day rolling average)



Dose	Uptake for Age 13+ (daily change)	Uptake for Age 16+ (daily change)	Uptake for Age 12+ (daily change)
First	70.3% (0.01%)	69.8% (0.01%)	68.1% (0.01%)
Second	67.4% (0.02%)	66.6% (0.02%)	64.1% (0.02%)
Booster	48.5% (0.04%)	47.4% (0.04%)	44.7% (0.03%)



Uptake across the system has plateaued over the past week. In total **2,153** vaccinations were delivered in the past 7 days. This consists of **545** (1st), **624** (2nd) and **984** (3rd/Winter boosters). The total vaccines delivered in the previous 7-day period was **2,327**, this however does not include spring boosters (shown separately)

Manchester resident/registered patients are still coming forward for a range of doses with an Evergreen offer being maintained across the city

Spring Vaccination Programme

Winter Booster coverage for eligible patients 17th May 2022

Booster Eligibility

Patients	Eligible for Booster (91 days+ second dose)	% of patients eligible for booster
Age 80+	14,156	89.3%
Age 75 - 79	11,102	90.2%
Age 70 - 74	16,230	89.9%
Age 65 - 69	20,441	89.8%
Age 60 - 64	26,999	91.7%
Age 55 - 59	34,329	78.4%
Age 50 - 54	38,725	75.6%
Age 40 - 49	93,173	66.1%
Age 30 - 39	126,437	58.5%
Age 18 - 29	169,223	55.0%
Age 16 - 17	15,913	32.0%
Age 12 - 15	34,207	13.7%
Age 5 - 11	61,247	0.2%
Grand Total	662,182	56.1%

Booster Coverage for eligible patients who are more than 91 days post second dose (previous day achievement)



Uptake on 3rd dose (winter booster) remains steady with **984** delivered in the previous 7 days to 17th May.

Booster Coverage for eligible patients who are more than 91 days post second dose (last 31 days)



Spring Vaccination Programme

Spring Booster coverage as of 17th May 2022



Vaccination Dose
 Dose 4

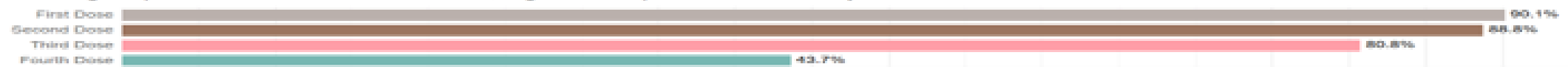
Specific Patient Group
 All

Eligibility and Delivery

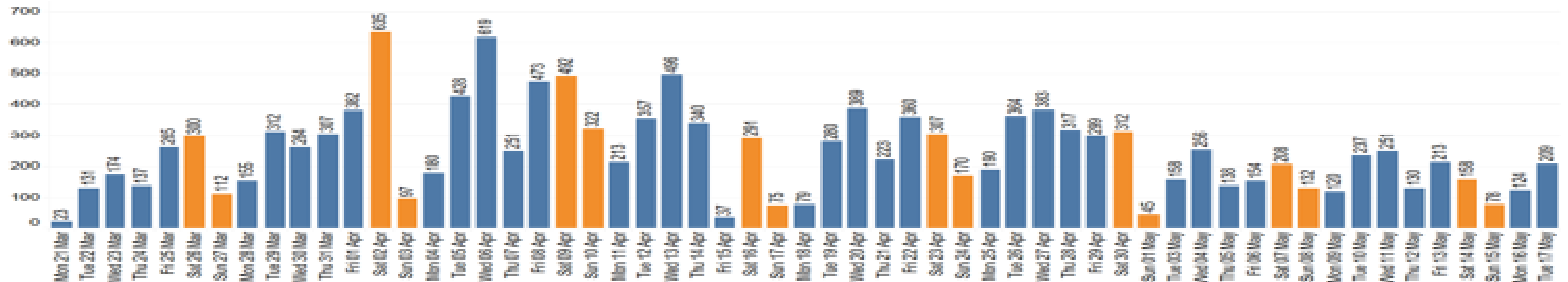
36,170 of patients are in scope for a Fourth Dose of a COVID Vaccine
 65.1% (23,561 / 36,170) of patients in scope are eligible for the Fourth Dose (based on previous dose history and timescales)
 67.0% (15,791 / 23,561) of eligible patients have received a Fourth Dose

Population Coverage for patients eligible for Fourth Dose

Percentage of patients that have received a dose, regardless of previous dose history.



Daily Delivery of Fourth Dose



Spring Vaccination Programme

5-11-year-old 1st Dose uptake as of 17th May 2022

Patient Group
Children (5 - 11)

Split By
Primary Care Network

Split	Eligible for D1	Received D1	% D1 of Eligible	Eligible for D2 (90 days after D1)	% Eligible for D2 from D1	Received D2	% D2 of Eligible	Eligible for D3 (90 days after D2)	% Eligible for D3 from D2	Received D3	% D3 of Eligible	Eligible for D4 (90 days after D3)	% Eligible for D4 from D3	Received D4	% D4 of Eligible
Arboretum and Longsight	9,284	480	7.2%	21	4.7%	0	28.6%	0	0.0%	0	0.0%	0	0.0%	0	0.0%
Beller Health MCR	2,888	184	6.4%	38	13.0%	18	42.8%	0	0.0%	0	0.0%	0	0.0%	0	0.0%
Cheetham Hill and Crumpton	6,485	455	7.1%	45	19.1%	5	10.9%	0	0.0%	0	0.0%	0	0.0%	0	0.0%
City Centre and Ancoats	1,256	97	7.7%	7	7.2%	5	42.0%	0	0.0%	0	0.0%	0	0.0%	0	0.0%
Clayton, Beckett and Openshaw	9,244	289	3.1%	44	15.4%	10	22.7%	0	0.0%	0	0.0%	0	0.0%	0	0.0%
Didsbury, Chorlton and Burnage	3,418	288	8.4%	32	11.2%	15	46.9%	0	0.0%	0	0.0%	0	0.0%	0	0.0%
Gorton and Levenshulme	5,721	475	8.3%	47	8.9%	10	21.3%	0	0.0%	0	0.0%	0	0.0%	0	0.0%
Higher Blackley, Harpurhey and Charlestown	5,490	238	4.4%	25	6.7%	0	0.0%	0	0.0%	0	0.0%	0	0.0%	0	0.0%
Hulme and City Centre South	1,479	37	2.5%	2	6.4%	0	0.0%	0	0.0%	0	0.0%	0	0.0%	0	0.0%
Miles Platting, Newton Heath and Motton	4,487	205	4.6%	22	19.8%	1	4.5%	0	0.0%	0	0.0%	0	0.0%	0	0.0%
Marbleton and Brooklands (Wythenshawe)	2,643	165	6.3%	27	16.3%	6	22.2%	0	0.0%	0	0.0%	0	0.0%	0	0.0%
West Central Manchester	4,522	528	7.3%	45	13.7%	12	26.7%	0	0.0%	0	0.0%	0	0.0%	0	0.0%
Withington and Fallowfield	3,481	180	5.2%	19	10.0%	0	31.6%	0	0.0%	0	0.0%	0	0.0%	0	0.0%
Wythenshawe	8,031	279	3.5%	27	6.7%	8	29.6%	0	0.0%	0	0.0%	0	0.0%	0	0.0%
Grand Total	99,444	3,684	3.7%	367	19.8%	97	24.4%	0	0.0%	0	0.0%	0	0.0%	0	0.0%

	% D1 of Eligible	% D2 of Eligible	% D3 of Eligible	% D4 of Eligible
Latest	6.2%	24.4%		
7 days ago	6.8%	23.2%		
Change	0.4%	1.3%		

Uptake remains low amongst the cohort at 6.2%. Though clinics get booked up when advertised in some parts of the city.

It's worth noting that Manchester has the 4th highest uptake in the cohort across GM.

Parents have a range of options to obtain vaccination

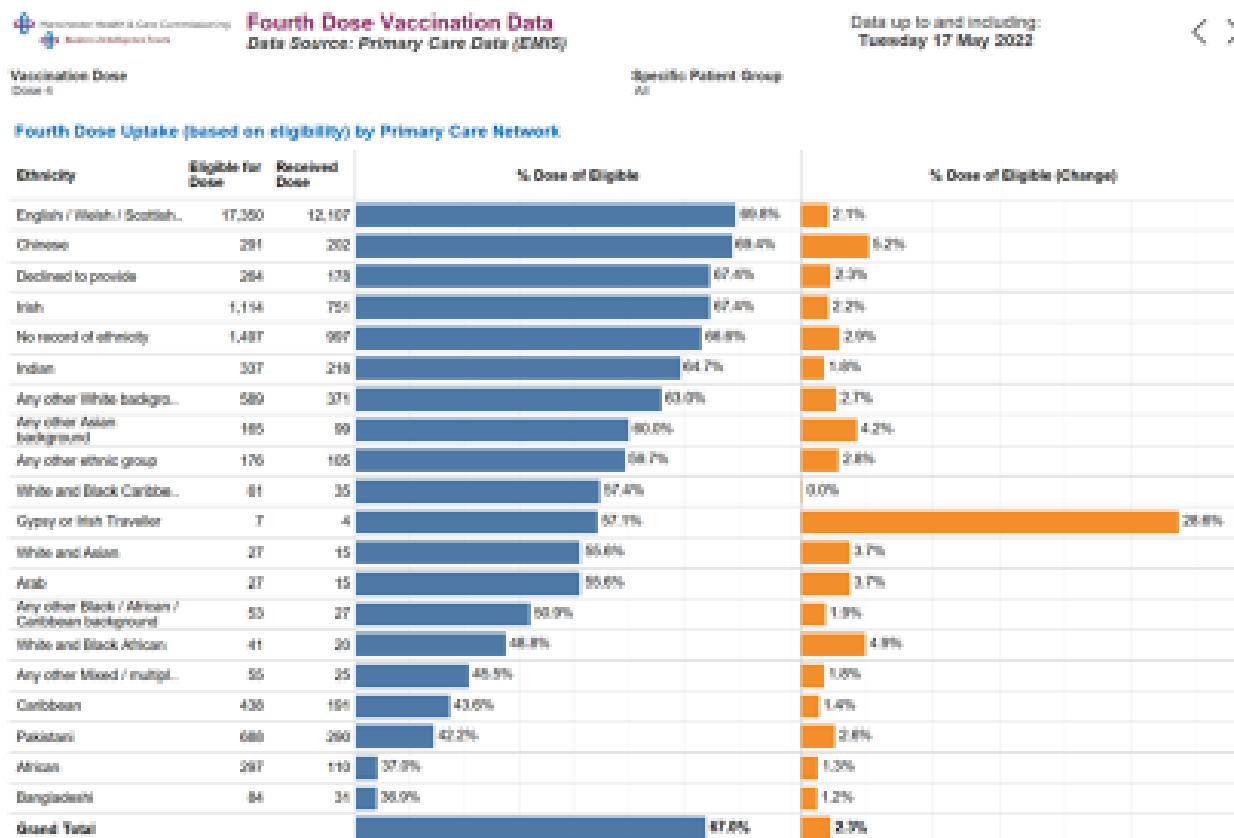
- NBS
- Accubook
- Walk in
- 911
- Gateway

All sites authorised for the delivery of this vaccination offer appointments via the above booking methods.

Families are bringing their CYP forward to pop ups for vaccination.

Spring Vaccination Programme

Spring Booster – breakdown by ethnicity

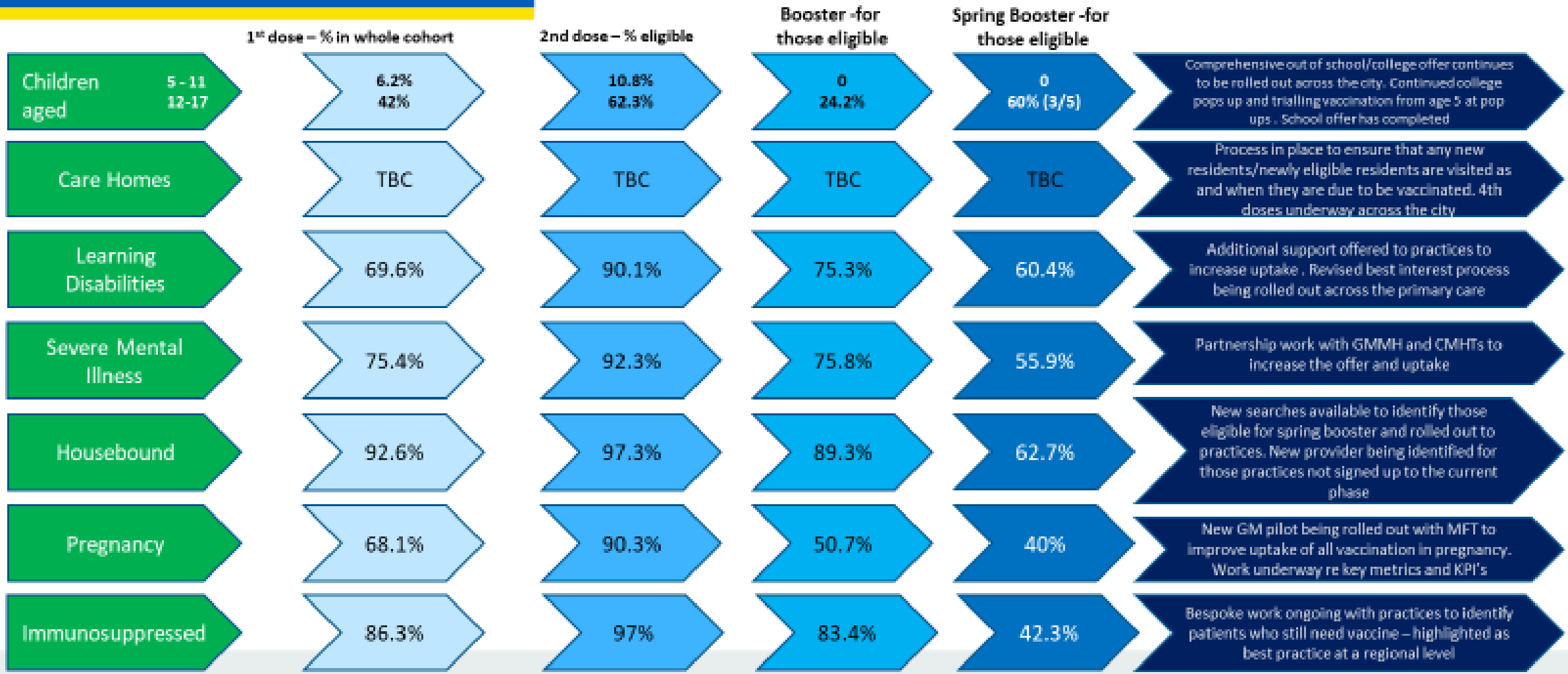


Work continues to improve uptake amongst population groups. Pop ups to target harder to reach communities are planned including

- Longsight Market
- Powerhouse
- Cheetham Hill Tesco

Spring Vaccination Programme

Coverage for key cohorts – as of 17.05.22



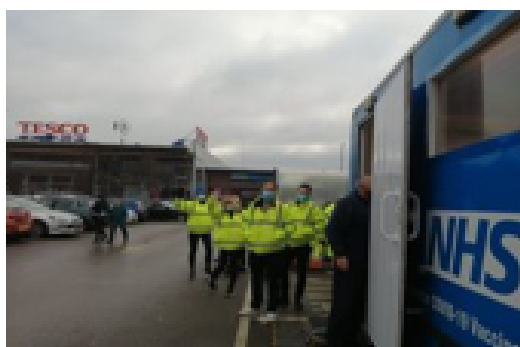


As part of Manchester's ongoing support to the Covid-19 vaccination programme and to ensure we have a continued Evergreen offer to the City's residents through the coming months we will continue to provide a pop-up service in parallel to our vaccination sites from 1st April 2022 until 31st March 2023.

- Pop-Up's have always formed a part of the wider vaccination offer and in more recent times become a real focus. The Peripatetic model was set up in January 2022 and has been very successful in supporting the citywide offer via an equity focused approach, delivering 2,173 vaccinations in the 54 clinics so far.
- Working closely with Integrated Neighbourhood Teams, Health Development Co-ordinators and Primary Care Network teams to deliver targeted outreach focused on engaging with hard-to-reach populations.
- There will be a requirement to support at least 2 pop up's a month for each PCN grouping.
- We will continue this work and it will remain data driven and focus on areas with low uptake, geographic gaps, review of cohorts, ethnicity, and respond to shifts in priority etc.
- There will continue to be an Ops Manager working with the PMO who will help co-ordinate this work.
- Access to vaccine at sites will be supported by a roving meds ops team member and the logistics will be worked out in the planning stages of each pop-up clinic.
- As previously stated, there is a process for identifying proposed outreach work and we will continue to work collaboratively with Ops Managers, HDC's, INT's etc.

Spring Vaccination Programme

Spotlight: Peripatetic Team Outreach Clinics



Date	Venue	Vaccinations given
19 th January	Eden School, Cheetham Hill	6
21 st January	TESCO car park, Crumpsall,	48
27 th January	Abraham Moss School, Cheetham Hill	24
28 th January	Moss Side Powerhouse	24
29 th January	Pakistani Community Centre, Longsight	58
4 th February	Moss Side Powerhouse,	90
5 th February	Pakistani Community Centre, Longsight	54
8 th February	Manchester Communications	36
10 th February	Xaverian College, Rusholme	90
11 th February	Powerhouse, Moss Side	86
12 th February	Pakistani Community Centre , Longsight	46
12 th February	Manchester University	24
14 th February	Clayton Sure Start Centre	20
18 th February	Powerhouse, Moss Side	36
19 th February	Pakistani Community Centre, Longsight	38
24 th February	Manchester University	24
25 th February	Powerhouse, Moss Side	36
26 th February	Pakistani Community Centre , Longsight	38
2 nd March	Gorton Oasis Centre,	41
3 rd March	Gorton Oasis Centre	26
3 rd March	Manchester University	26
4 th March	Loretto College	120
4 th March	Moss Side Powerhouse,	54
8 th March	Xaverian College, Rusholme,	114
9 th March	Welcome Centre, Cheetham Hill	3
10 th March	Manchester University	12
11 th March	Moss Side Powerhouse	60

Date	Venue	Vaccinations given
15 th March	Connell college, Beswick,	30
16 th March	Manchester University	15
18 th March,	Didsbury Mosque	24
19 th March,	Farrs Wood Complex, Didsbury	60
25 th March	Moss Side Powerhouse	48
1 st April	Moss Side Powerhouse	30
2 nd April	Manchester Settlement, Openshaw	60
7 th April	The Fort Complex	24
08 April	Crowne Plaza Hotel	60
12 th April	UOM - Whitworth Hall	18
14 th April	Tesco Crumpsall	30
21 st April	Tesco Crumpsall	30
22 nd April	Loretto College	75
23 rd April	Harpurhey Market	48
26 th April	Minehead Court, Didsbury	58
26 th April	Oasis Centre, Gorton	24
28 th April	Tesco Crumpsall	28
28 th April	MMU - Business School	24
29 th April	Moss Side Powerhouse	30
4 th May	Didsbury Grove Lane	22
5 th May	Tesco Crumpsall	36
5 th May	Manchester University	36
6 th May	Moss Side Powerhouse	6
7 th May	Longsight Market	30
12 th May	Tesco Crumpsall	21
14 th May	Longsight Market	42
19 th May	Tesco Burnage	24

- The top areas identified as requiring support based on uptake of 1st, 2nd and Booster using data taken from Tableau: Ardwick and Longsight, Hulme, Moss Side and Rusholme, Cheetham & Crumpsall.
- Pop ups in some areas were repeated - Moss Side Powerhouse, Longsight Pakistani Community Resource Centre, which has proven to be successful. Some work has been done at LVS/back to practice also.

Spring Vaccination Programme

Spotlight: Collaborative working with Covid Health Equity Manchester Sounding Boards

Proposal to deliver pop up at Longsight market on a Wednesday in April

Consultation with South Asian Sounding Boards who provided feedback:

- *Ramadan was not an ideal time as there may be hesitancy within the Muslim community. It was advised that in order to target this community, vaccine engagement events/pop-ups should be carried out after Eid (3-4th May)*
- *The market area is a good location, but Saturdays would be the best day to Pop-Up*
- *11am-3pm is preferred timings on a Saturday*

The pop-up series was planned post Ramadan/Eid beginning on Saturday 7th May (See spotlight slide)



Wednesday (above) & Saturday (below)



Spring Vaccination Programme



Spotlight: Peripatetic team case study – Longsight Market

Challenge:

Address the low vaccine coverage amongst the Longsight population

Response:

For consistency, 4 Pop-Up vaccination clinic were booked into to be held within Longsight market - a high footfall area that serves the local population. A 'whole family' offer has been put in place so that we can vaccinate anyone over 5 years old

Prior to the event the MHCC Integrated Neighbourhood Team linked in with sounding boards, local charities and Covid chat co-ordinators who supplied volunteers from local area to help run the pop-up clinic.

Leaflets were printed in a variety of languages and fixed banners were put up in the local area advertising the events

Outcome:

Circa **70** vaccines were delivered during the first 2 sessions – this included over **20** 5-11 vaccinations.

The second clinic saw a **66%** increase in turnout suggesting word of mouth/advertising was having an effect

Spring Vaccination Programme

Spotlight: Peripatetic team case study – Manchester Settlement



Challenge:

Address the low vaccine coverage amongst the Openshaw population

Response:

A Pop-Up vaccination clinic was held on the grounds of Manchester Settlement, a charity which serves the local area

The MHCC Integrated Neighbourhood Team linked in with Manchester Settlement and another local charity, Ceebee Gold who promoted the event amongst their networks two weeks before.

Leaflets were distributed in the local area advertising the event

Several volunteers, including local marshals were mobilized to help on the day.

Outcome:

60 vaccines were delivered during the session. A high proportion of these were spring boosters

Qualitative evidence suggests that patients weren't sure where to go to get their vaccine and were grateful for a local offer

Several pop-up events have been planned for June in Openshaw due to this clinic's popularity.

Autumn Covid-19 Boosters 2022

Interim JCVI advice released 19th May recommending that Covid-19 vaccines are offered to Residents in a care home for older adults and staff; Health and social care staff; All those aged 65 and over; Adults aged 16-64 in a clinical risk group. JCVI will provide further advice on the timing and value of doses for less vulnerable older adults and those in clinical risk groups ahead of Autumn 2022

Estates review

NHSE is undertaking a value for money assessment of all non-NHS Estates currently being leased as vaccination sites. Manchester has submitted a robust case for retention of The Jain, Irish Centre, Grange and Forum vaccination sites based on clear evidence of the lack of alternative NHS estate capacity and the risks to health equity of removing local vaccination sites.

GM Maternity Vaccination Pilot

A new service was launched in April to deliver Covid, Flu and Pertussis vaccinations to pregnant women attending ante-natal appointments at Manchester MFT sites and Salford. Uptake has been strong with over 500 women vaccinated in the first three weeks.

Changing Governance

A new Health Protection Board is being established for the City – vaccination programme governance is being reviewed to reflect new reporting arrangements for the Board and emerging locality structures under the new GM Integrated Care Board.

Development of 0-5 Childhood Immunisations Improvement Project

A project team is now in place to address decline and drive improvement in childhood immunisation coverage, building on learning from the Covid-19 vaccination programme.

The purpose of this project is to plan, co-ordinate and deliver change across system partners to address the decline in childhood immunisation coverage and drive improvement to protect the health of children in Manchester.

- ✓ **Project Scoping document drafted**
- ✓ **Childhood 0-5 Immunisation Steering Group and working group in place**
- ✓ **Public Health Specialist Immunisation Nurse is Project Lead**
- ✓ **Leadership and Capacity from Health Protection Hub identified**
- ✓ **Key workstreams identified**
 - Literature Review/Best Practice models
 - Immunisation Promotion Project Review – commissioned from CHIS
 - Data and Intelligence development
 - PCN Childhood Immunisation pilots' development
 - Influenza 2's & 3's
 - Looked After Children
 - Hepatitis B for at risk babies @ 4weeks